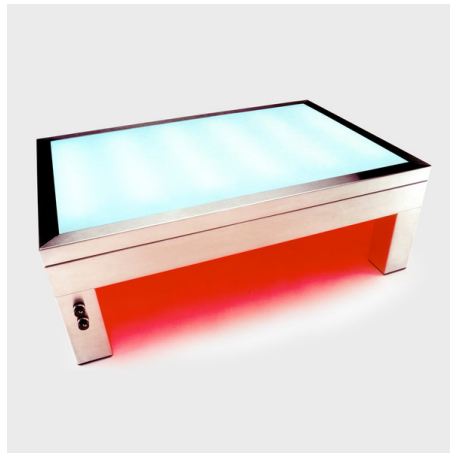




## Declaration of Conformity



### **COFFEE TABLE**

#### **Metal Household Furniture**

Item code SK CT1

Product Bar Code 5060043060015

Country of origin United Kingdom

### **SUCK UK LTD**

Camden Park Studio, Camden Park Road, London NW1 9AY

UK Registered Company Number 4718480

SUCK UK LTD certify STANDARD COFFEE TABLE is in conformity with the essential health, safety and environmental protection requirements of European Directives.

A handwritten signature in black ink, appearing to read 'Jude Biddulph &amp; Sam Hurt'.

Jude Biddulph & Sam Hurt - Managing Directors

1 January 2021

Product conformity is of paramount importance. Safety and responsibility for environment begins at the design stage of each product, the specification of materials and components, right through to the production method. We strive to supply you with a safe product and one that conforms to all regulations.



This is  
not a toy



Class I  
IEC Protection



Recyclable  
packaging

**This is not a Toy** This product is not intended for children, and has not been classified as a toy.

**IEC Class I** Earthed chassis electrical appliance.

**Recyclable Packaging** Made from materials that can easily be recycled if disposed of correctly.

**This product has been tested and conforms to the requirements of the following standards.**

Letter of Conformity (5 Page PDF)